

AMALFI DUO-QUADRO



CARAVITA®

Assembly and operating instructions

Foreword

1 Foreword

Foreword

We are pleased that you have chosen our product. By purchasing a CARAVITA product, you have opted for quality, made from the best materials and designed to the highest standards.

Read the instructions in this document carefully to set up the product safely. Always observe the safety instructions listed and do not perform any unauthorised modifications to the product.

Imprint

© Copyright

This publication, including the document, is protected by copyright. Any utilisation or use requires the prior written consent of CARAVITA GmbH. This applies in particular to reproduction, distribution, editing, translation, microfilming and storage and processing in electronic systems, including databases and online services. Violations are subject to compensation.

CARAVITA GmbH
Hans-Wilhelm-Renkhoff-Straße 2
D-97828 Marktheidenfeld
Phone: +49-8458-60389-0
Email: info@caravita.eu
www.caravita.de

Table of Contents

1	Foreword	2
2	Introduction.....	4
2.1	Safety Information	4
2.2	Notes on the target group and use of the instructions	4
2.3	Explanation of signal words.....	4
2.4	Basic safety instructions	
3	Product information	6
3.1	Intended use.....	6
3.2	Part name.....	6
4	Assembly	7
4.1	Unpacking the product	7
4.2	Transporting the product	8
4.3	Scope of delivery	9
4.4	Set up the sunshade	10
5	Commissioning	14
6	Operation.....	15
6.1	Open the sunshade roof	15
6.2	Levelling the sunshade roof (optional)	17
6.3	Close sunshade roof	18
6.4	Using the telescopic push rod (optional)	20
6.5	Removing the sunshade roof	22
7	Disassembling	24
8	Care instructions.....	25
9	Storage	25
10	Troubleshooting.....	26
11	Warranty conditions.....	27
12	Other information	27

2 Introduction

2.1 Safety instructions

It is important for the safety of persons to follow the instructions. Failure to observe the instructions may result in personal injury and/or damage to property when using the product. Failure to comply shall release Caravita from liability.



Warnings are labelled with this or a similar symbol in the instructions.



- Read the instructions before installing and using the product!
- Observe the safety, setting, operating and maintenance instructions!
- When passing on the product, give the instructions to the new owner!
- Keep the instructions until the product is disposed of!

2.2 Notes on the target group and use of the instructions

Target group

The instructions are intended for persons who install, operate, maintain and/or service the product.

Work relating to the electrical connection of the components may only be carried out by a qualified electrician.

For assembly, knowledge of occupational safety, accident prevention regulations, handling ladders, installation of fastening materials, commissioning and operation of the product must be available.

If one of these qualifications is not available, a specialised assembly company must be commissioned.

Contents

These instructions belong to the following product:
Caravita Amalfi DUO, QUADRO

2.3 Explanation of the signal words



DANGER

Indicates an imminent danger that will result in death or serious injury.



WARNING

Indicates a potentially imminent danger that could lead to death or serious injury.



CAUTION

Indicates a possible imminent danger that could lead to minor injuries.



NOTE

Indicates a potentially imminent situation that could lead to product or property damage.

2.4 Basic safety instructions

The safety instructions and warnings listed serve to protect your health and the product. The instructions must be read carefully and followed.

Damage caused by improper handling or failure to follow the instructions is not covered by the warranty. No liability is assumed for consequential damage!



WARNING

If a radiant heater is available, follow the instructions for the radiant heater!

General safety instructions **DANGER**



Danger to life and limb if the sunshade falls over

The sunshade can tip and fall over due to weather conditions or mechanical impact with its heavy weight.

- Only use the sunshade for its intended purpose.

- In strong winds and thunderstorms, retract the sunshade or do not set it up.
- Do not climb on the sunshade.
- Do not leave children near the sunshade without supervision.
- Do not use the sunshade without a suitable stand.
- Do not leave the sunshade unattended.
- Only use the sunshade as sun protection when it is fully extended.



DANGER

Fire hazard due to flying sparks

The fabric of the sunshade is flammable.

Do not use flames or open fire near the sunshade.



DANGER

Danger to life and limb from lightning strikes The sunshade can become a lightning conductor.

- Never seek shelter under a sunshade during thunderstorms.



DANGER

Choking hazard due to packaging material

Plastic films, polystyrene parts and small parts from the packaging can become dangerous toys for children.

- Keep children away from small parts.
- Do not leave packaging material lying around carelessly.



CAUTION

Risk of injury due to tipping

Carelessness can cause the sunshade to tip over with its heavy weight.

- Two people are always required for assembly.
- The base must be designed with sufficient ballast to prevent the closed sunshade from tipping over in strong winds.



WARNING

Risk of injury to uninvolved persons

If people are within the opening radius of the sunshade canopy, they may be injured if they are not careful when opening the canopy.

- Before opening the sunshade roof, ensure that no bystanders are within the opening radius of the sunshade roof.

Operation

Operating a defective product can injure people and/or damage neighbouring parts.

- The product may only be operated if it is in perfect technical condition.

Assembly preparation

Incorrect assembly can impair the safety, function and service life of the product. Persons may be injured and/or the product or neighbouring parts may be damaged.

- The specified assembly steps and their sequence must be observed.
- The product may only be installed if it is in perfect technical condition.
- The assembly substrate must be checked for load-bearing capacity before mounting.

3 Information about product

Product description

The Amalfi sunshade provides protection from direct sunlight and some protection from the weather. The product is installed in a fixed stainless steel base and is operated using a crank winch. The inclination of the sunshade roof can be adjusted as an option. The fabric of the sunshade roof is made of easy-care and washable material. The shape of the sunshade roof is available in different designs.

Implementation

The product is designed in 2 versions, which differ in the number of sunshade roofs and crank cable winches.

AMALFI DUO 1 and 2

- 2 x sunshade roof
- 1 x pole
- 1 x self-stopping detachable crank cable winch with 4 mm

ALMALFI QUADRO

- 4 x sunshade roof
- 1 x pole
- 1 x self-stopping detachable crank cable winch with 4 mm

Technical data

The products are exclusively customised and made to measure. Dimensions and weight vary depending on the model version.

The exact weight and size of the product can be found on the order or delivery note.

3.2 Intended use

The following information applies to the following product:
Caravita Amalfi with optional motor

The product is an external sun shading system that is used to protect against heat and glare in summer. The product is free-standing and is used to shade open spaces.

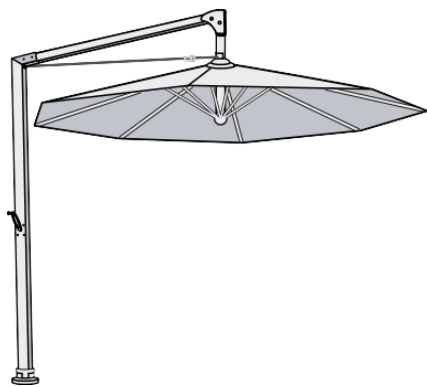
The product is to be used as sun protection and not as rain protection.

Misuse can result in considerable hazards.

Additional loads on the product due to suspended objects or cable tensioning can lead to damage or falling and are therefore not permitted. Caravita is not liable for any damage resulting from this.

Intended use also includes observing these instructions and complying with the maintenance specifications contained therein.

3.3 Part name



1	Pole with stainless steel pedal (optional) and crank gear
2	Cantilever with single head or levelling head Head (optional)
3	Sunshade roof
4	Cranks
5	Stainless steel sole
6	Mobile plate stand

4 Assembly



CAUTION

Risk of injury due to tipping during assembly

Tipping or dropping the product can result in serious injuries.

- 2 people are required to assemble and set up the product.
- Mount the product on a level surface.



NOTE

When installing several sunshades, a distance of at least 25 cm must be maintained between the individual sunshades.

We are happy to answer questions about assembly by e-mail or via our service hotline. The contact details are listed on the first and last page of this document.

4.1 Unpacking the product



DANGER

Choking hazard due to packaging material

Plastic films, polystyrene parts and small parts from the packaging can become dangerous toys for children.

- Keep children away from small parts.
- Do not leave packaging material lying around carelessly.



NOTE

The cardboard box is reused as a space-saving storage box for storing the sunshade.

- Do not cut or tear the box when unpacking.

Remove the sunshade from the packaging

- 1 Check the packaging for damage.
- 2 Carefully cut the adhesive tapes and plastic straps with a knife without damaging the sunshade in the box.
- 3 Carefully unpack the sunshade and the individual parts.
- 4 Check the contents of the packaging for completeness and defects.



NOTE

In the event of obvious defects in the packaging or incompleteness of the delivery, the specialised dealer, forwarding agent or manufacturer must be informed immediately in order to assert claims for damages and compensation.

- 5 Properly dispose of the remaining packaging material (polystyrene, plastic).

4.2 Transporting the product

The product can be transported without additional aids.

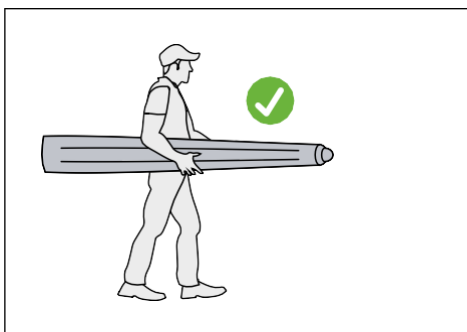


NOTE

Material damage due to cracks and bent struts

Careless transport can damage the sunshade roof.

- Do not pull the sunshade over the ground by the sunshade cover or the protective case.
- Do not carry the sunshade by individual sunshade struts.



Hold the sunshade with both hands during transport

4.3 Scope of delivery

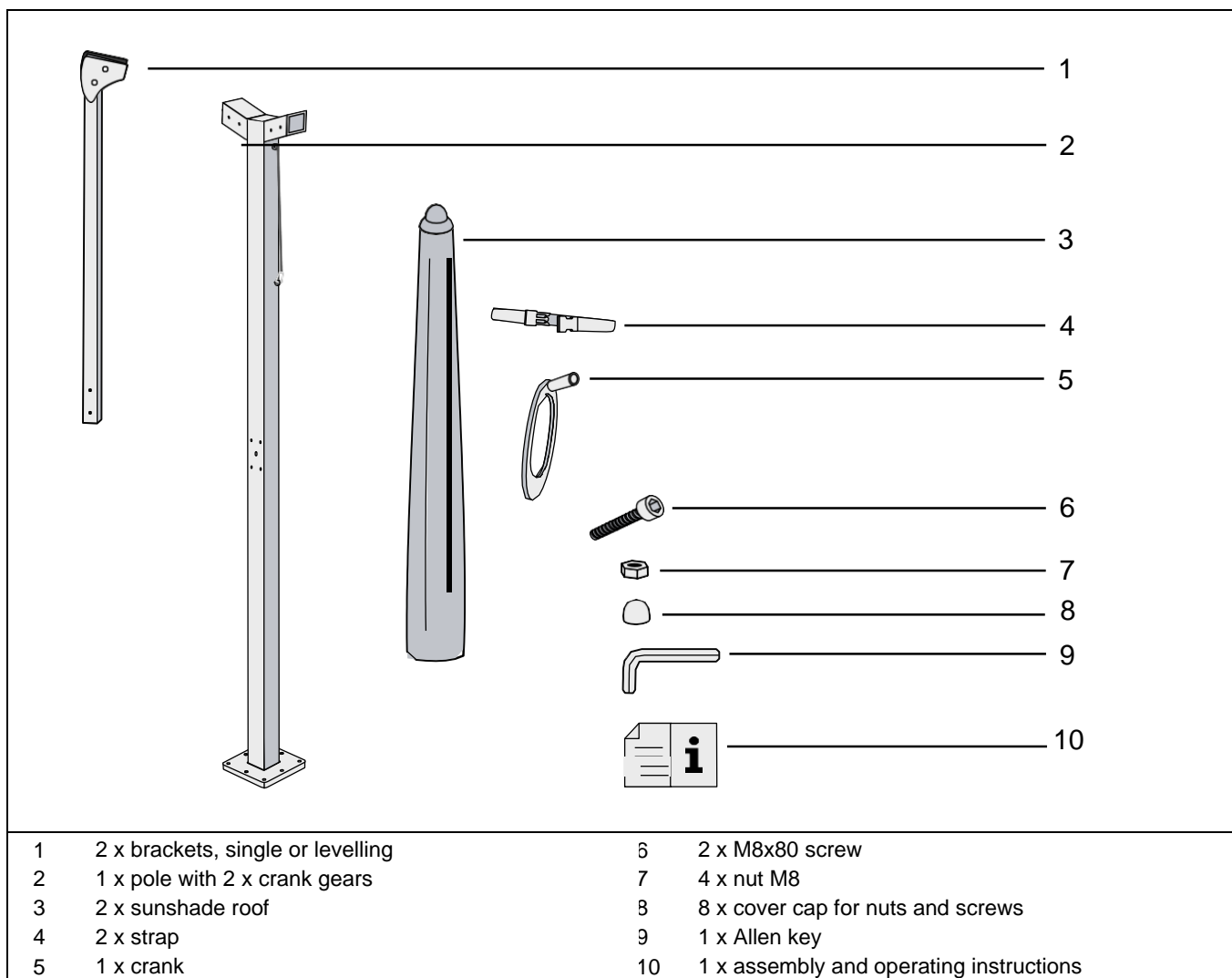


Fig. 1: Scope of delivery Amalfi Duo

INFO



- Check scope of delivery according to delivery note!
- Check parts for intactness!
- Compare the situation on site with the order data!
- Interrupt assembly and contact CARAVITA if parts are damaged or if the specifications do not correspond to the order!

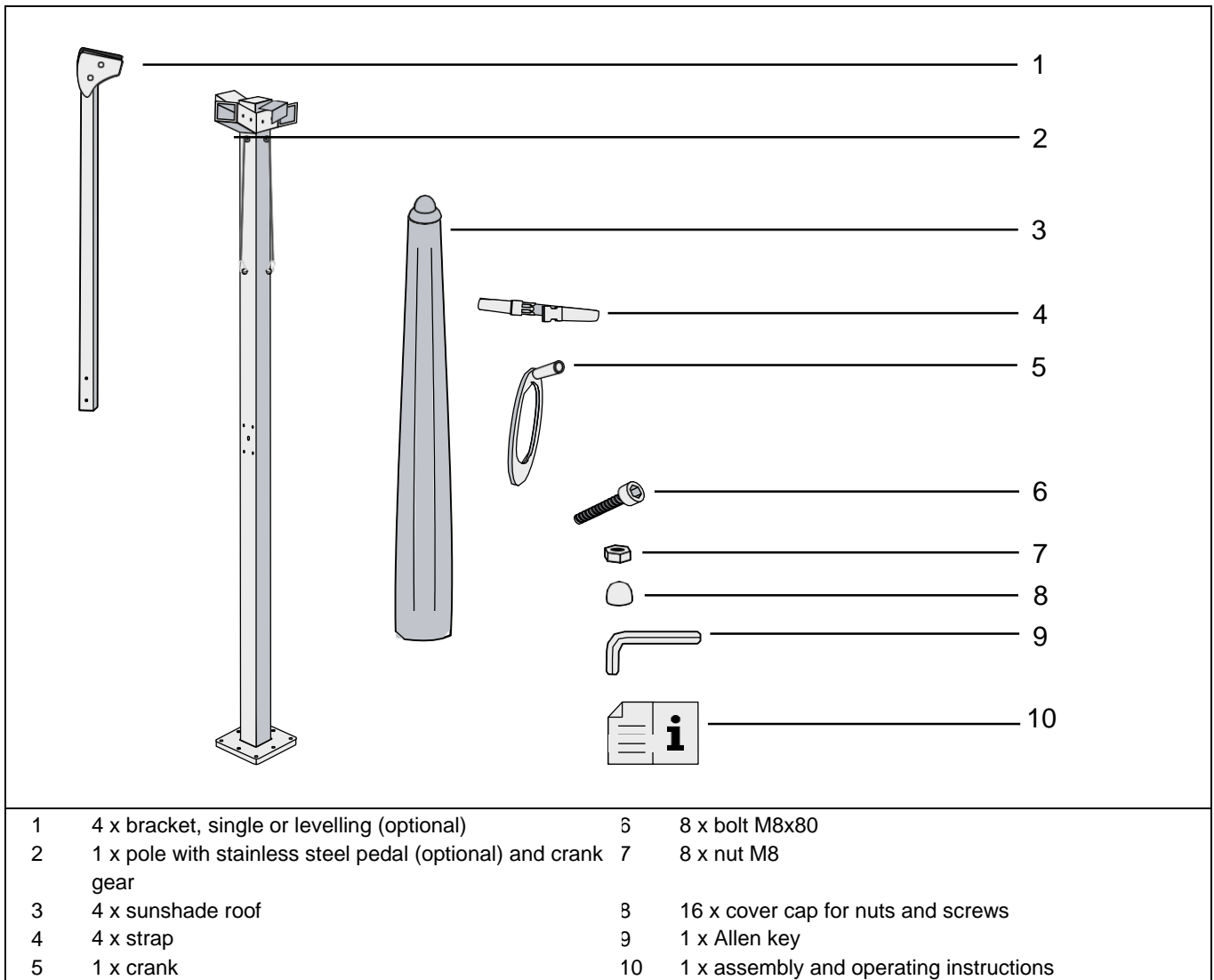


Fig. 2: Scope of delivery Amalfi Quadro

4.4 Set up the sunshade

Preparation

- For safety reasons, set up the sunshade with at least 2 people.
- Prepare the mobile stand or base sleeve according to the manufacturer's instructions.
- The mobile stand must be designed with sufficient ballast.
- Provide a stepladder.
- Have the stainless steel screws and the Allen key included in the scope of delivery ready.



NOTE

Before firmly installing the base sleeve, consider the alignment of the sunshade. The product can only be attached to the base sleeve in the specified orientation.

- The desired alignment of the sunshade must be determined when concreting the base sleeve.

Pole alignment Amalfi DUO 1

i INFO

Note on aligning the threaded holes:

- The threaded holes of the base sleeve point towards the side edges of the sunshade roof, as shown.

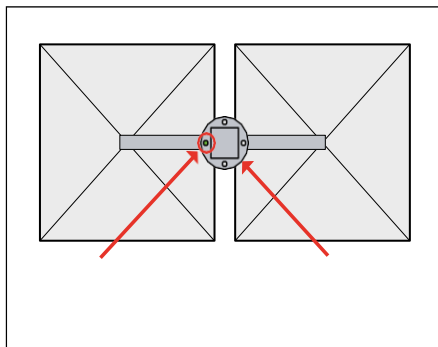


Fig. 3: Alignment of the threaded holes
DUO 1

Pole alignment Amalfi DUO 2 and Amalfi Quadro

i INFO

Notes on positioning the base sleeve:

- The base sleeve must be placed diagonally to the sunshade as shown.
- The brackets must run over the side edges of the base sleeve.

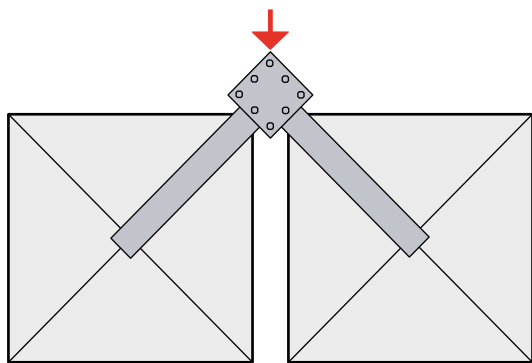


Fig. 4: Alignment of base sleeve and bracket DUO 2

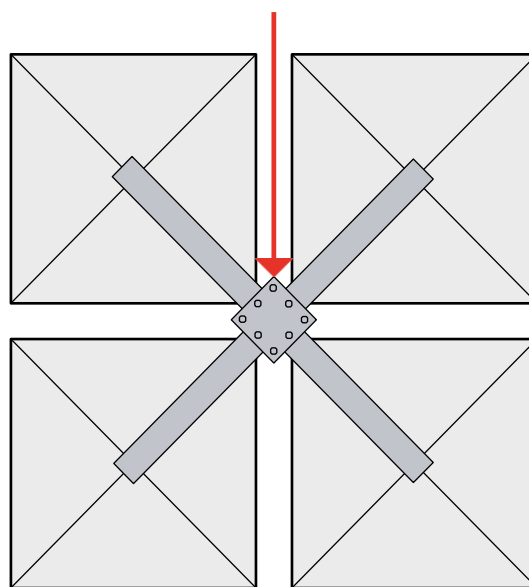
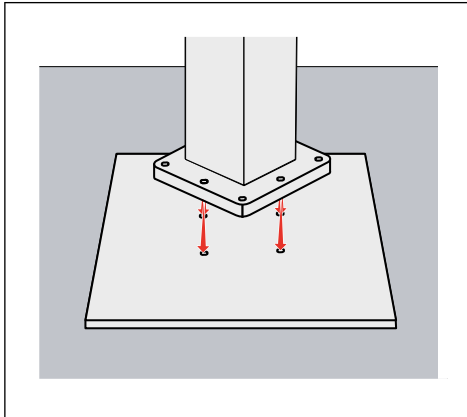


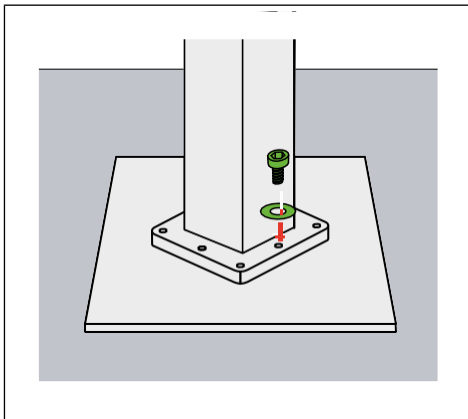
Fig. 5: Alignment of base sleeve and Quadro bracket

Assemble the pole on the base

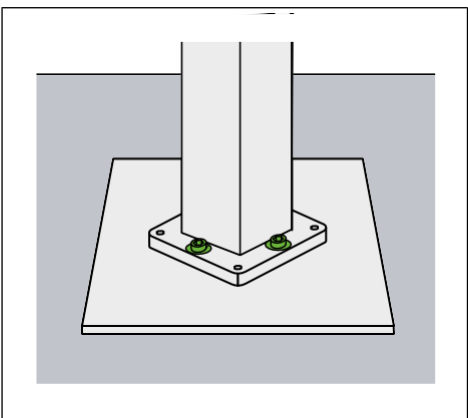
Minor deviations from the illustrations are possible.



- 1 Place the pole with the flange on the base sleeve or mobile stand



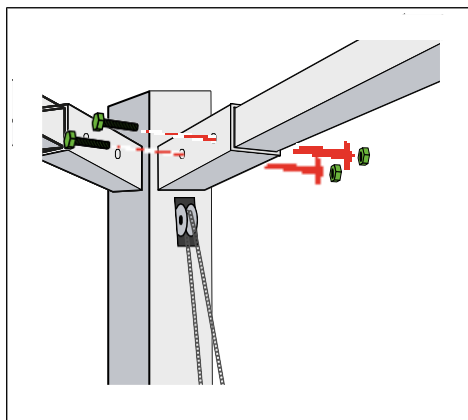
- 2 1 person fastens the pole with the 4 screws including washers, while the 2nd person holds the pole in place.
 ► The sunshade gains a slight hold.



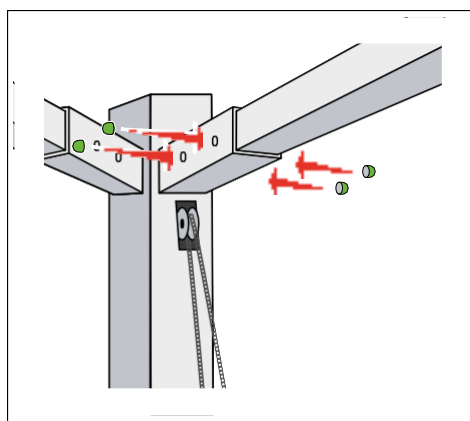
- 3 Tighten all 4 screws with the Allen key.
 ► The sunshade has sufficient stability.

Assemble the bracket

- The pole is assembled in the base sleeve or in the mobile stand.



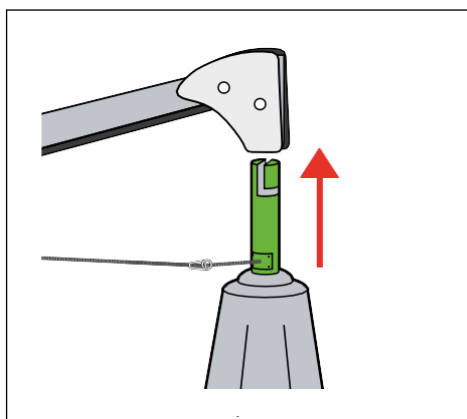
- 1 Insert the supplied M8x80 screws through the holes and tighten them securely.



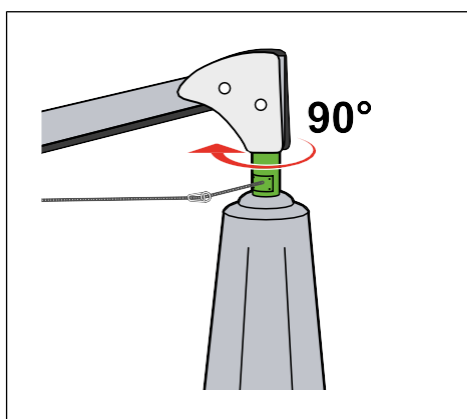
- 2 Place the protective caps over the nuts and screw heads.

Attach the sunshade roof

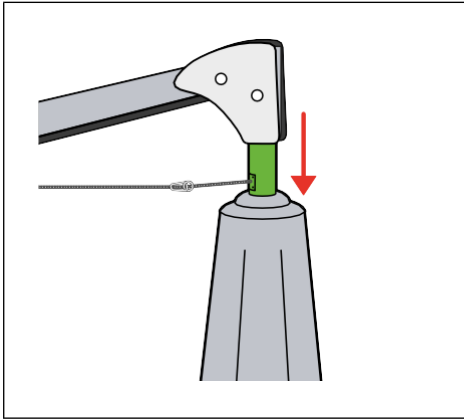
- The jib and pole are assembled to be stable.



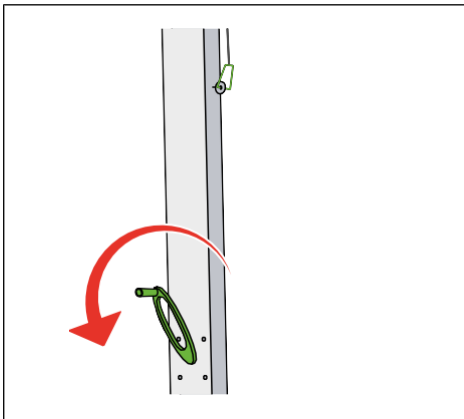
- 1 Lift the sunshade roof with both hands at the bottom.
- 2 Insert the sunshade roof into the bracket using the bayonet adapter



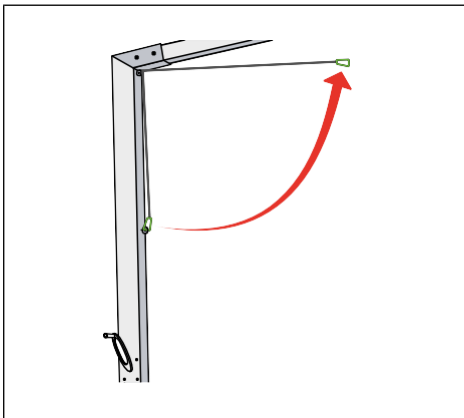
- 3 Rotate the sunshade roof by 90°.



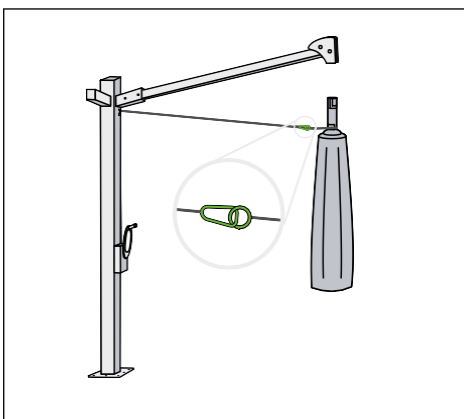
- 4 Lower the sunshade roof.
 - The bayonet adapter snaps into place.



- 5 Turn the crank slightly anti-clockwise.
 - i** **INFO**
If the crank is turned too much, the steel cable can become entangled in the gearbox housing.
 - The steel cable is loosened.



- 6 Release the carabiner from the cable anchorage on the gearbox.



- 7 Attach the carabiner to the rope of the sunshade.

5 Putting into use



WARNING

Risk of injury due to improper use of the sunshade. Improper use can result in personal injury.

- Do not reach into openings on the product during commissioning.
- Do not hang any foreign objects on the sunshade that are not expressly mentioned in the instructions.
- Remove snow or other external contamination.
- Close the sunshade in case of high wind loads.
- Before opening the sunshade roof, ensure that there are no bystanders within the opening radius of the sunshade roof.
- Keep children away from the controls.

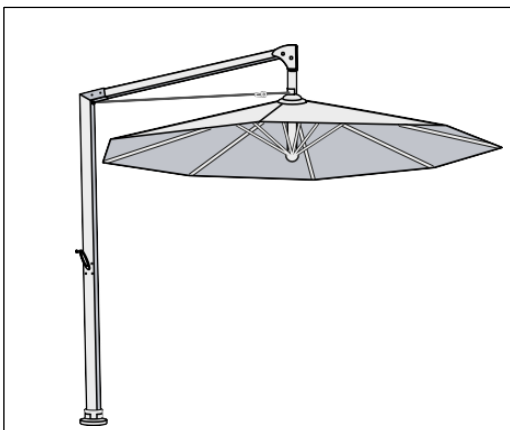


CAUTION

Material damage due to improper use of the sunshade.

Improper use can damage the sunshade.

- Do not light an open fire under the sunshade.
- Remove snow or other external contamination.
- Close the sunshade in case of high wind loads.
- Do not hang on the sunshade or other components.
- Sunshade can tip over if you are not careful.
- Do not hang any foreign objects on the sunshade that are not expressly mentioned in the instructions.
- Remove obstacles from the travelling area.
- Do not force the sunshade open.



- 1 Remove the protective case.
- 2 Assemble the bracket.
- 3 Attach the sunshade roof.
- 4 Open the sunshade, see chapter [„Opening the sunshade roof“, page 22](#)
- 5 Levelling the sunshade roof (optional).
- 6 Close the sunshade.
- 7 Remove the sunshade roof.
- 8 Attach the protective case.

Operation

6 Operation

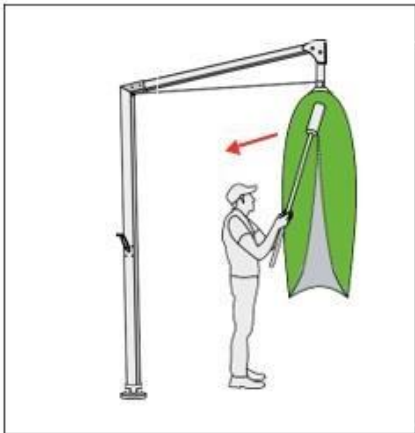


CAUTION

Risk of crushing due to carelessness when operating!

Persons in the travelling area may be injured.

- Keep travelling area clear of people!
- Keep children away from the controls!



Remove the protective case.

- Using the telescopic push bar, see chapter: [Using the telescopic push bar \(optional\)](#).

6.1 Open the sunshade roof

The plastic nets attached to the struts serve as protection against transport damage. If the sunshade roof is open, these can be carefully removed with a knife or scissors.



WARNING

Risk of injury to uninvolved persons

If people are within the opening radius of the sunshade canopy, they may be injured if they are not careful when opening the canopy.

- Before opening the sunshade roof, ensure that no bystanders are within the opening radius of the sunshade roof.



INFO

When removing the plastic nets with scissors or a knife, do not damage the fabric of the sunshade roof.

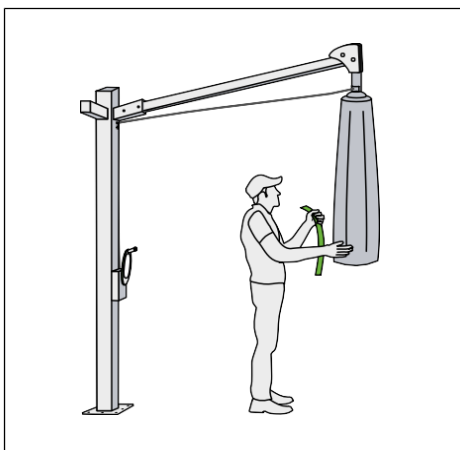


NOTE

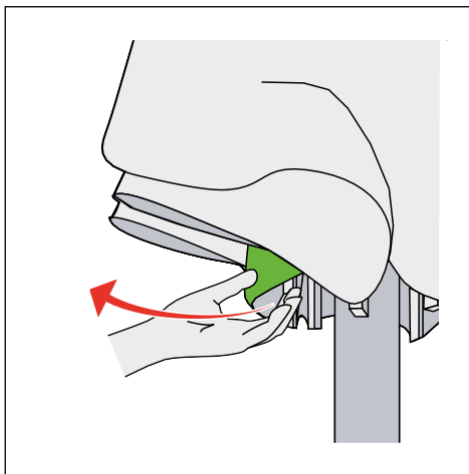
Material damage due to incorrect pulling apart of the struts

- If the sunshade does not open or close easily, call our service hotline or rectify the problem via the chapter [see chapter 9/page 25](#).

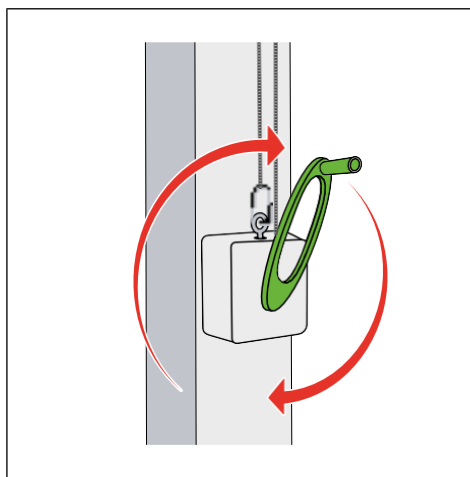
- The sunshade is securely fastened in the fixed base sleeve.



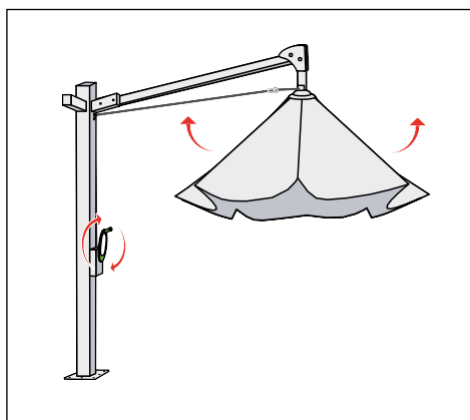
- 1 Remove the strap from the sunshade roof.



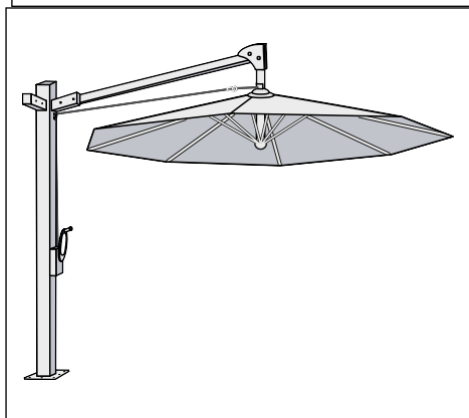
- 2 Pull the struts slightly outwards.
 - The struts are loosened.



- 3 Insert the crank into the device on the pole.



- 4 Turn the crank clockwise until the fabric ► is slightly taut.
The sunshade roof opens.



- 5 Turn the crank handle as far as it will go.



INFO

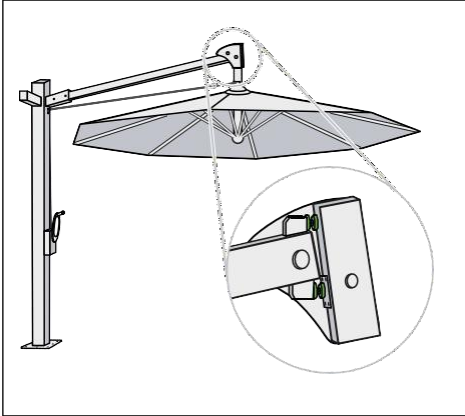
If the crank is turned beyond the stop, the gearbox may be damaged.

- 6 Remove the crank from the pole and store it in a safe place.

Operation

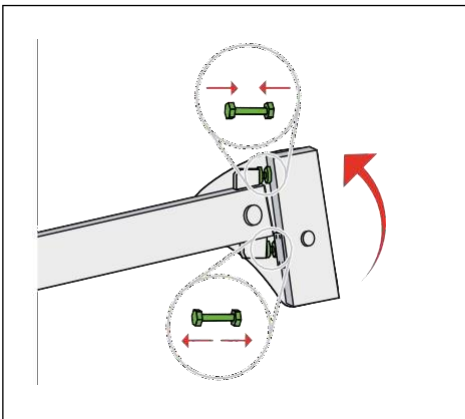
6.2 Levelling the sunshade roof (optional)

The sunshade roof can be levelled. The mechanism is not intended for tilting the roof. The roof pitch is regulated using two adjusting screws, which are located behind the panels at the upper end of the bracket.



► The sunshade roof is hooked in.

Tilt the sunshade roof outwards



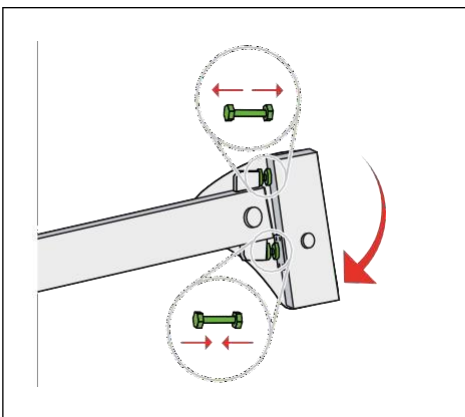
- 1 Loosen the lock nut of the upper screw.
- 2 Tighten the upper screw until the desired inclination is reached.
► The upper screw rests on the pole head.
- 3 Tighten the loosened lock nut.
► The upper screw is fixed.
- 4 Unscrew the lower screw until it rests against the bracket.



INFO

Both screws must be in contact with the bracket. The mechanism must no longer wobble.

Tilt the sunshade roof inwards



- 1 Loosen the lock nut of the lower screw.
- 2 Tighten the upper screw until the desired inclination is reached. ► The lower screw rests against the pole head.
- 3 Tighten the loosened lock nut.
► The lower screw is fixed.
- 4 Unscrew the upper screw until it rests against the bracket.



INFO

Both screws must be in contact with the bracket. The mechanism must no longer wobble.

6.3 Close sunshade roof



CAUTION

Risk of injury due to tipping

Carelessness can cause the sunshade to tip over with its heavy weight.

- The base must be designed with sufficient ballast to prevent the closed sunshade from tipping over in strong winds.

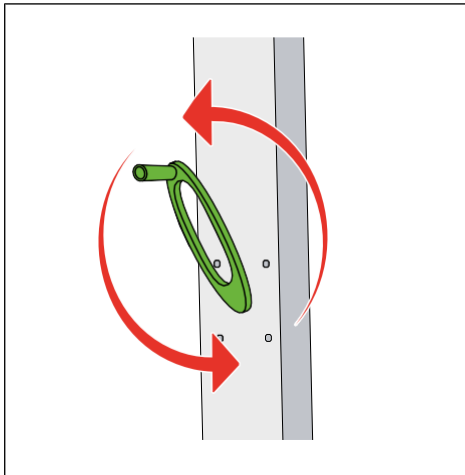


NOTE

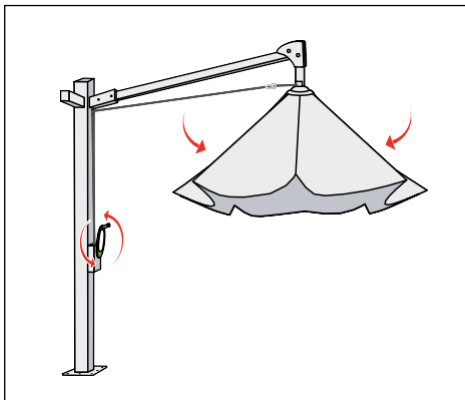
Material damage due to abrasion of the sunshade fabric

Permanent flapping in the wind can damage the sunshade fabric by rubbing against the struts. No claims for damages can be asserted for this.

- Always secure the closed sunshade roof with the belt.



- 1 Insert the crank into the device on the pole.

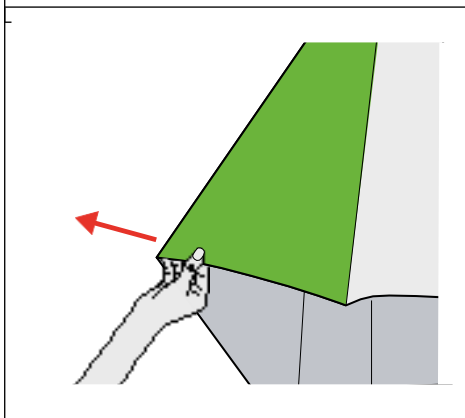


- 2 Turn the crank anti-clockwise until the sunshade is almost closed.

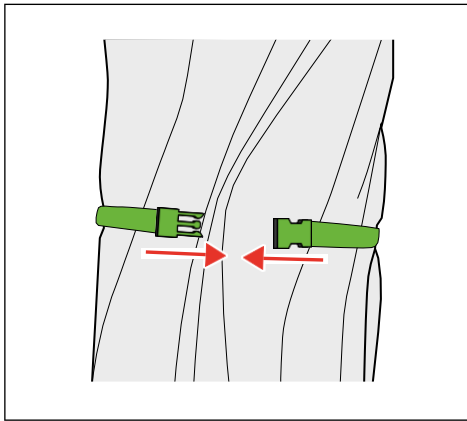


INFO

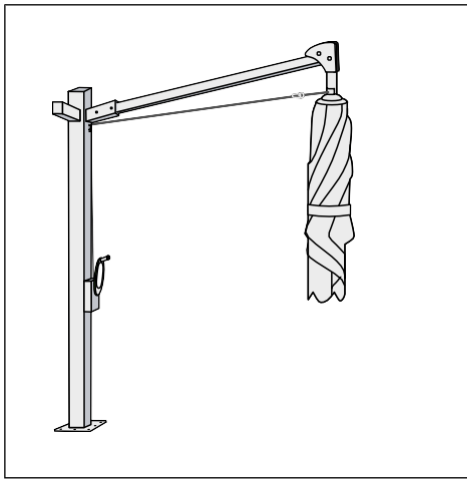
The crank can only be turned when the cable is under tension.



- 3 Pull the fabric out from between the struts to prevent it from being pinched or damaged.

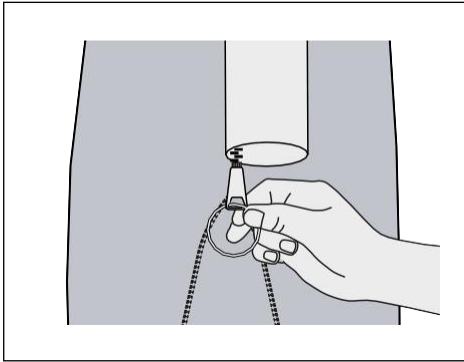


- 4 Secure the closed sunshade roof with the strap.

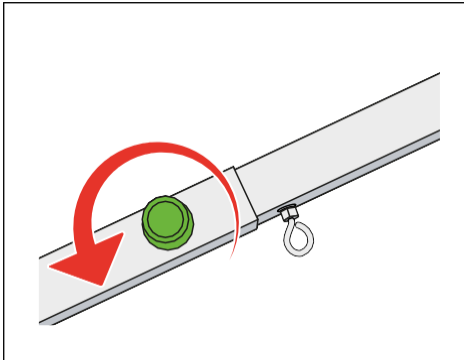


- 5 Place the pulled-out fabric segments around the pole on one side and secure with the strap.

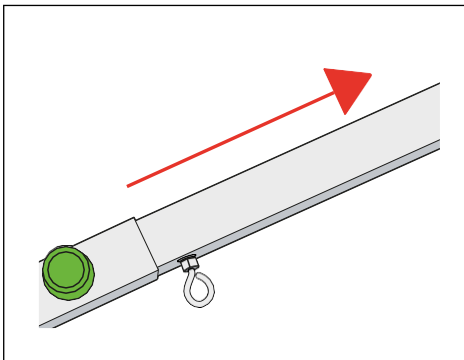
6.4 Using the telescopic push rod (optional)



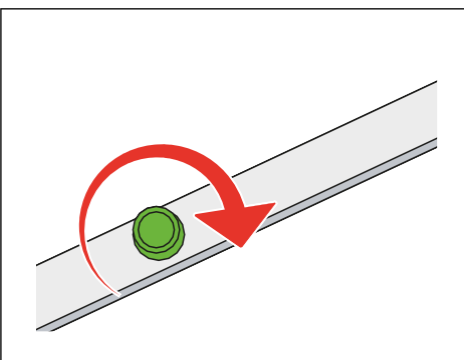
- 1 Attach the key ring to the zip of the protective case.



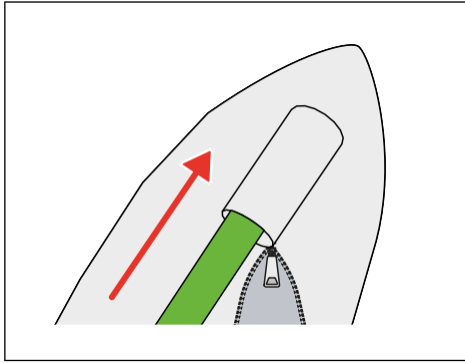
- 2 Open the knurled screw on the telescopic push rod.



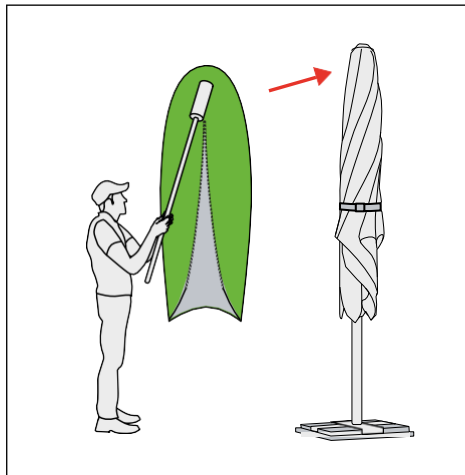
- 3 Pull the telescopic push rod to the required length.



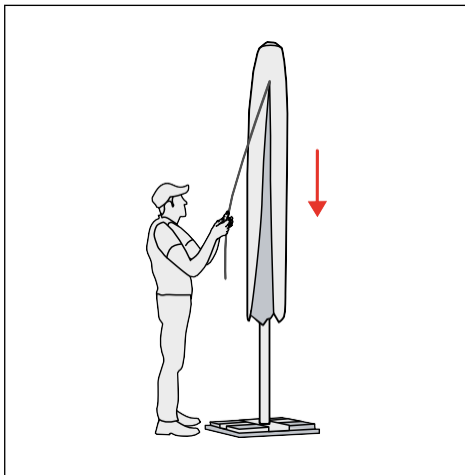
- 4 Tighten the knurled screw on the telescopic push rod.



- 1 Insert the telescopic push rod into the pocket of the protective case.

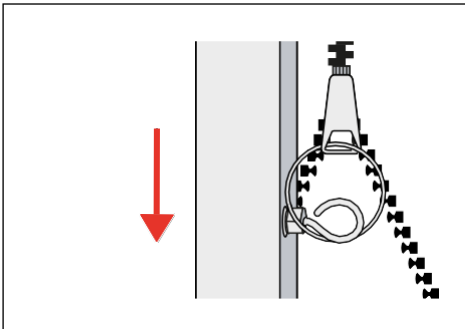


- 2 Lift the protective case over the sunshade using the telescopic push rod.



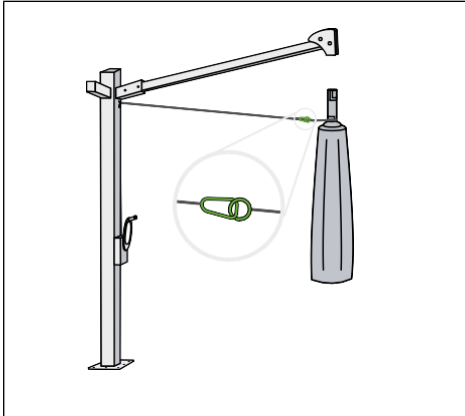
- 3 Close zip.

- 4 Loosen the eyebolt of the telescopic push rod in the key ring on the zip of the protective case.

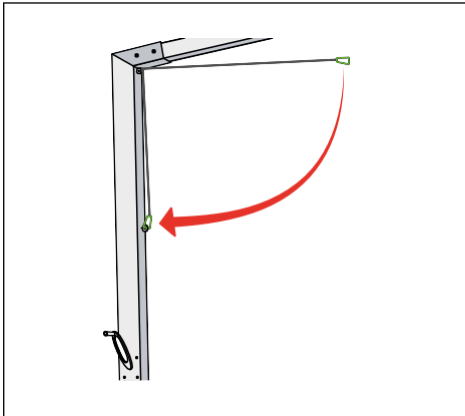


6.5 Remove the sunshade roof

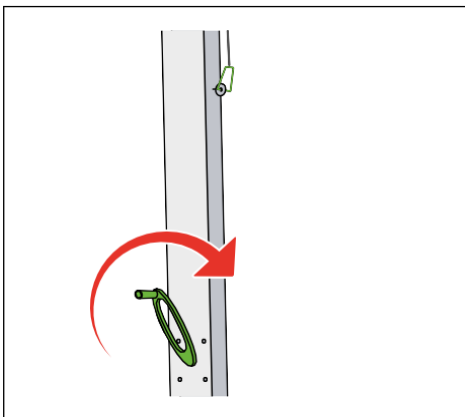
► The sunshade roof is closed and secured with the strap.



1 Detach the rope from the sunshade roof using the snap hook.



2 Attach the cable to the eyebolt of the gearbox housing.



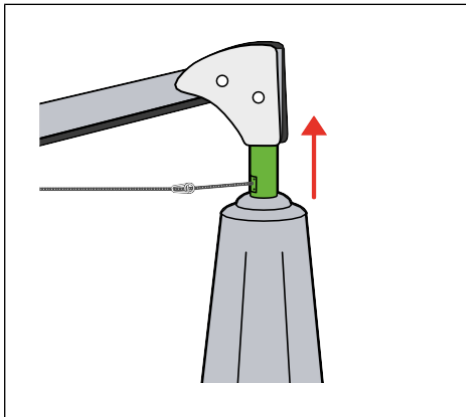
3 Wind the rope.



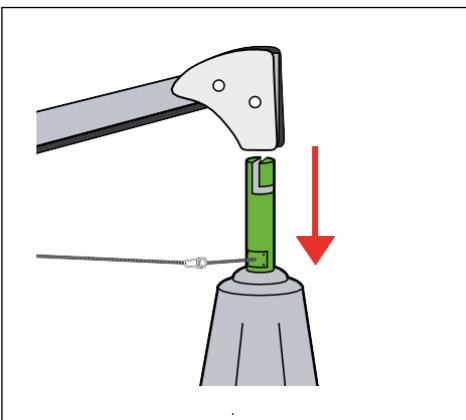
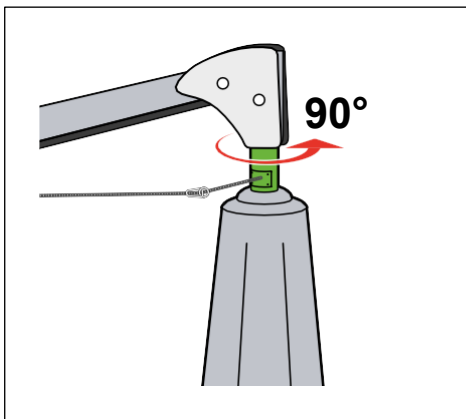
INFO

The crank can only be turned when the cable is under tension.

Operation



- 4 Lift the sunshade roof and turn it 90° anti-clockwise.



- 5 Remove the sunshade roof from the lift using the bayonet adapters.



INFO

The rope must be tensioned.

- 6 Attach the cable to the eyebolt of the gearbox housing.
7 Wind the rope.
8 Store the blind and sunshade in a dry and safe place.

Disassembly

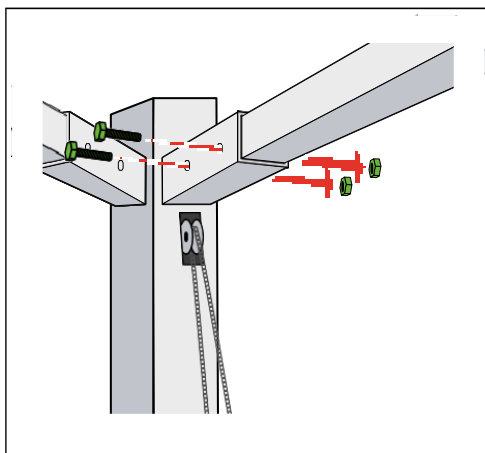
7 Disassembly

During the season, the bracket with the pole can remain installed outdoors without hesitation. At the end of the season or when required, the pole and bracket are dismantled and stored. Disassembly is carried out in the reverse order to assembly.

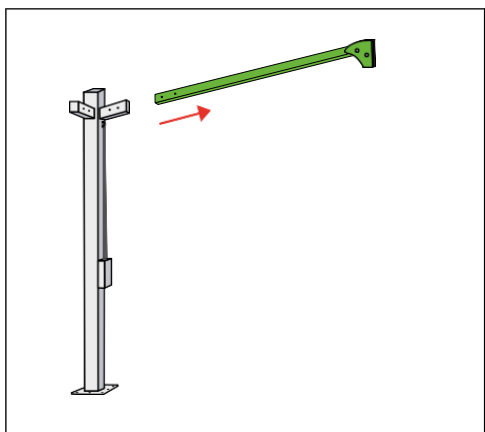


INFO

It is recommended not to leave the pole without the bracket in the base or base sleeve. Water can get into the gearbox through the opening in the mast tube.



- 1 Loosen the screws and store in a container.



- 2 Pull out the bracket.
- 3 Pull the pole out of the base or base sleeve.
- 4 Keep the pole and bracket in a safe, protected place.

8 Care instructions

Sunshade fabric



NOTE

Material damage to the sunshade fabric due to incorrect cleaning and cleaning agents

The acrylic fabric of the sunshade roof is impregnated and requires special cleaning and cleaning agents.

- Always wash the sunshade fabric in cold water.
- Do not use a high-pressure cleaner to clean the sunshade fabric.
- Avoid strong friction during cleaning, e.g. with hard brushes or sponges.

Cleaning the sunshade fabric

- If possible, remove fallen leaves (foliage) immediately (starting point for microbial infestation).
- Dry-brush out the dirt at regular intervals.
- Treat light stains with lukewarm water and a soft brush.
- Treat stubborn stains by hand washing with a little commercial mild detergent, rinse well with clear water, leave to dry and treat with impregnating agent.

Bracket and pole

Clean and maintain bracket and pole.

- Wash the surfaces with a gentle cleaning agent.
- Refresh the stainless steel parts with commercially available stainless steel polish.
- Use spray oil or silicone spray at regular intervals to protect joints and rollers against corrosion.

Storage

9 Storage



NOTE

Material damage due to abrasion of the sunshade fabric

Permanent flapping in the wind can damage the sunshade fabric by rubbing against the struts. No claims for damages can be asserted against CARAVITA for this.

- Always secure the closed sunshade roof with the strap.



NOTE

Material damage due to mould

If the protective case is pulled over the damp fabric, mould will form.

- Only cover the protective case when the fabric is completely dry.

The sunshade can be stored outdoors and in a protected, dry room. For both options:

- Secure the sunshade roof with straps.
- Allow the fabric to dry completely before storing.
- Put the protective case on.

Outdoor storage



CAUTION

Risk of injury due to tipping

Carelessness and strong winds can cause the sunshade to tip over with its heavy weight.

- The mobile stand must be designed with sufficient ballast to prevent the closed sunshade from tipping over.

Storage in a dry room

The following applies to storage in a dry room:

- Pack the sunshade in the box in which it was delivered.
- Store the sunshade horizontally in a dry room.

10 Troubleshooting

If the sunshade malfunctions and cannot be rectified with the help of the following instructions, please contact us via our CARAVITA service hotline. You will find the contact details on the first and last page of these instructions.

The following malfunctions can occur when using the sunshade:

Problem	Cause	Rectification
The sunshade roof can no longer be opened or closed.	The rope is loose and has become knotted in the housing.	<ul style="list-style-type: none"> ■ Pull out the rope by hand in one strong pull and at the same time turn the crank to the left. Do not turn the crank with too much force. ■ If the rope knot cannot be loosened, remove the gearbox. ■ With the sunshade roof open: Close the sunshade roof and loosen the sunshade struts. The struts must not be directed inwards. Loosen the sunshade struts again.
The crank cannot be turned.	The rope is too loose and without tension.	<ul style="list-style-type: none"> ■ Grasp the rope with one hand above the gearbox and pull it out while turning the crank with the other hand.
An initial resistance when turning the crank (left).	The drive is blocked.	<ul style="list-style-type: none"> ■ Keep turning the crank vigorously.
The sunshade roof springs down slightly when opened.	Tangles of the rope lie on top of each other in the drive and slip off.	<ul style="list-style-type: none"> ■ This cause has no effect on the function of the sunshade.

Warranty conditions

11 Warranty conditions

The following warranty conditions apply:



www.caravita.de/garantie

12 Other notes

Please observe the general safety instructions:

www.caravita.de/hinweise





CARAVITA®

Part of
WAREMA GROUP